

Rotary Table



Quick Start Guide



Getting Started with the automated Rotary Table

This quick start guide provides you with the resources help you improve your 3D scanning.

The Rotary Table comes with:

- Physical Rotary Table
 - Users either purchased the standard Rotary Table or the Rotary Table HD which simply can handle heavier objects to be scanned

Assembling the Rotary Table

Instructions for assembly can be found in this Quick Start Guide

3D Scanning System

In order to use this Rotary Table as part of the 3D scanning system, FlexScan3D software, and a compatible scanner must additionally be purchased.

Customer Support

If you have any installation issues after following this guide, please contact:

Worldwide

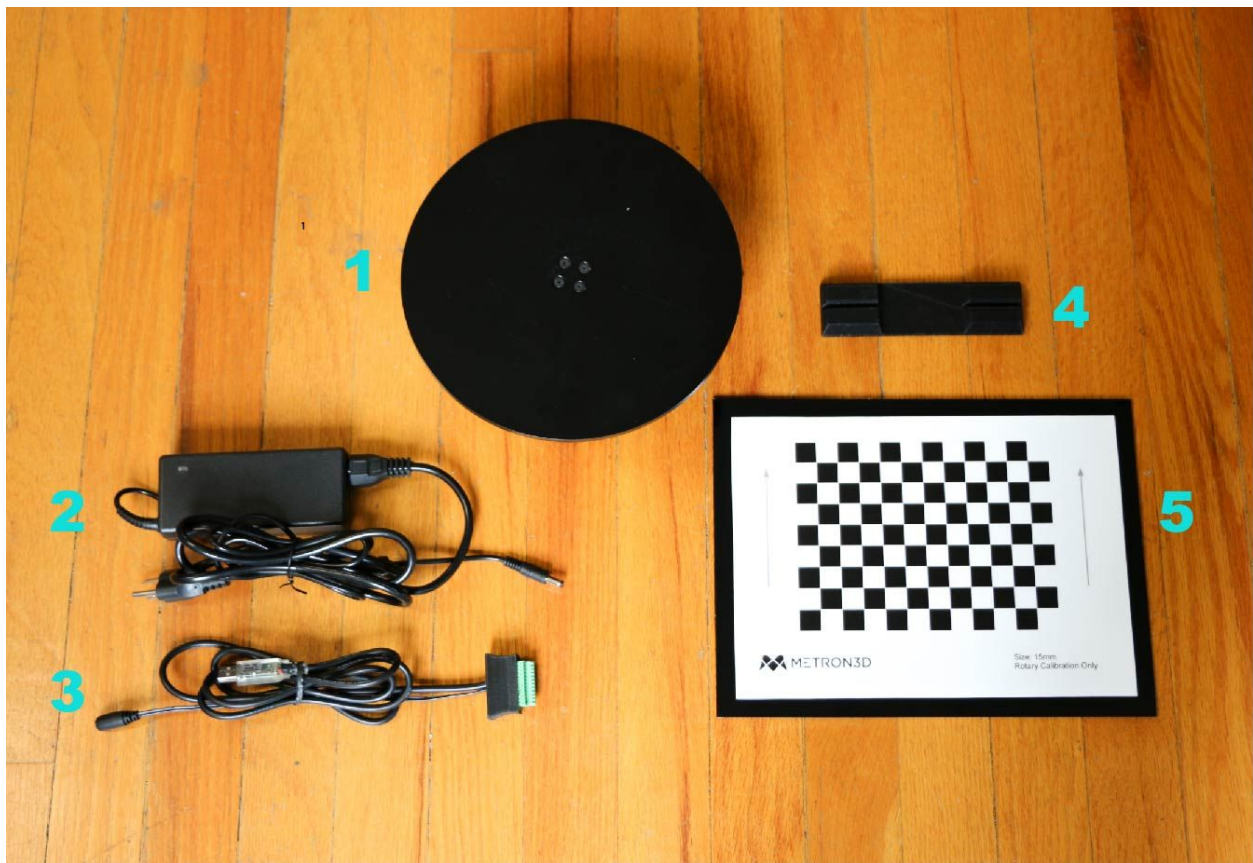
Email: support@metron3d.com

Web: www.metron3d.com

North America

Phone: +1 434 946 9887

Congratulations on purchasing the Rotary Table! Here are the steps to set up the Rotary Table for easier 3D data acquisition. The components delivered are labeled below.



Number	Item
1	Rotary Table
2	Power Supply
3	USB Cable
4	Calibration Board Stand
5	Calibration Board

Connect Proper Cables

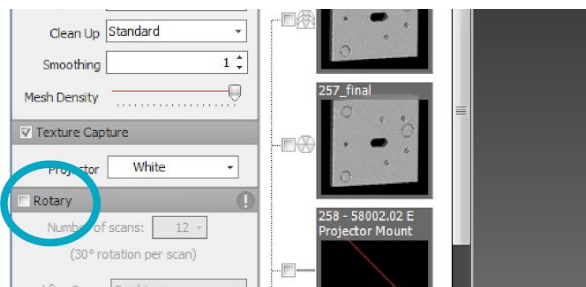
Locate the USB cable and securely plug the green end into the green socket on the Rotary Table. It only fits in the plug one way so if it doesn't seem like it fits, flip the plug over and try again. Plug the power source cable into the barrel jack hanging off of the plug. Then plug the power source into a wall outlet and the USB into the back of a computer.



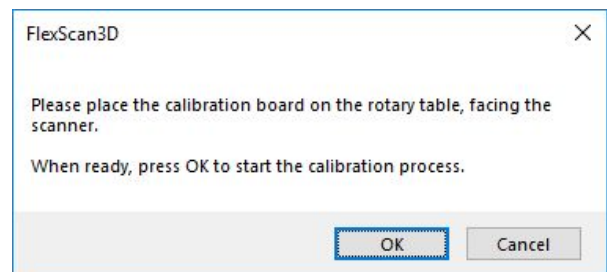
Connect to FlexScan3D

Prior to connecting the Rotary Table to FlexScan3D, please have the scanner hooked up and calibrated.

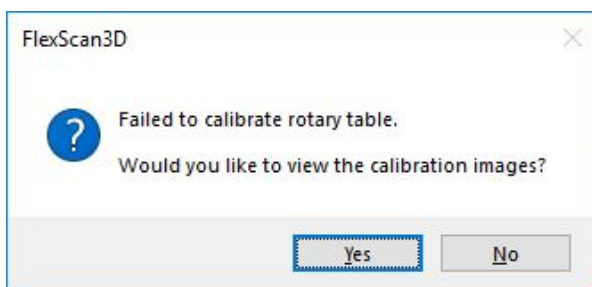
With the Scan page open check the **Rotary** box to activate, located on the left side



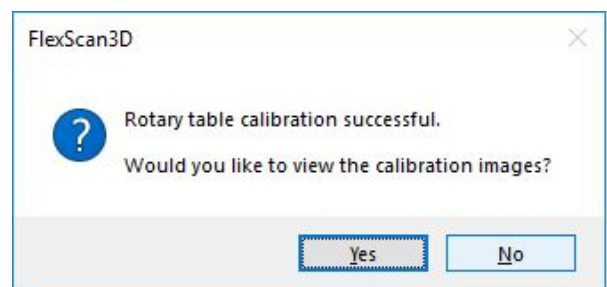
The program is going to ask if you want to calibrate. Follow the prompt and place the calibration board in its stand and onto the center of the Rotary Table and press **OK**



If the Rotary Table is not in clear view of both cameras or the calibration board is not visible this failure prompt will appear. Select **Yes** to see the images to tell how the calibration failed. Then select **OK** to go back to the scan page. Try adjusting the rotary and scanner positions until everything is visible and try again.

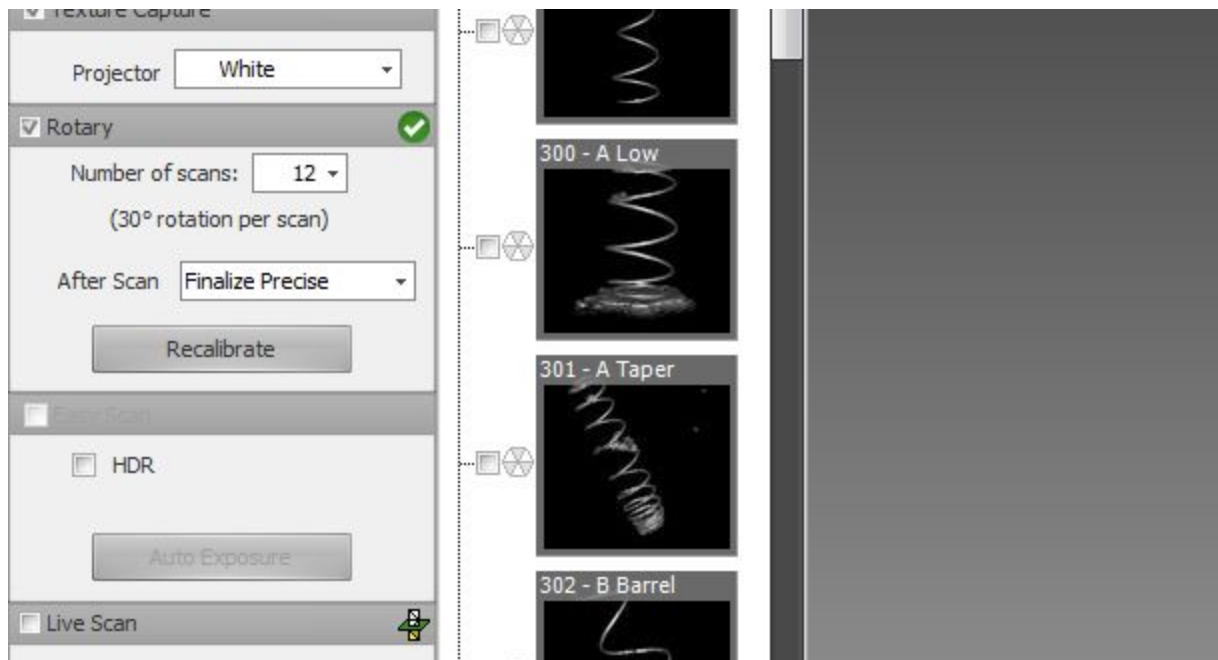


When the calibration is successful users will see this prompt. Users can see successful calibration images by press **Yes** and then **OK**. To get back to the scan page. Or they can hit **No** for this prompt and skip straight back to the scan page



How to Operate

There are a few options that can aid the use of the Rotary Table. In the same section as the Rotary checkbox there are also options for how many scans per one table rotation. We suggest 6 to 12 scans is enough to get accurate data but not too many to overwhelm the data. The second drop down box ask what the user wants to do after. The scans can be automatically aligned, combined, or totally finalized. Users are encouraged to play around with these options to find what works best for their application



Additional information about the Rotary Table and FlexScan3D can be found on the Internet at www.metron3d.com as well as the Metron3D channel on Youtube for video demonstration and tutorials.